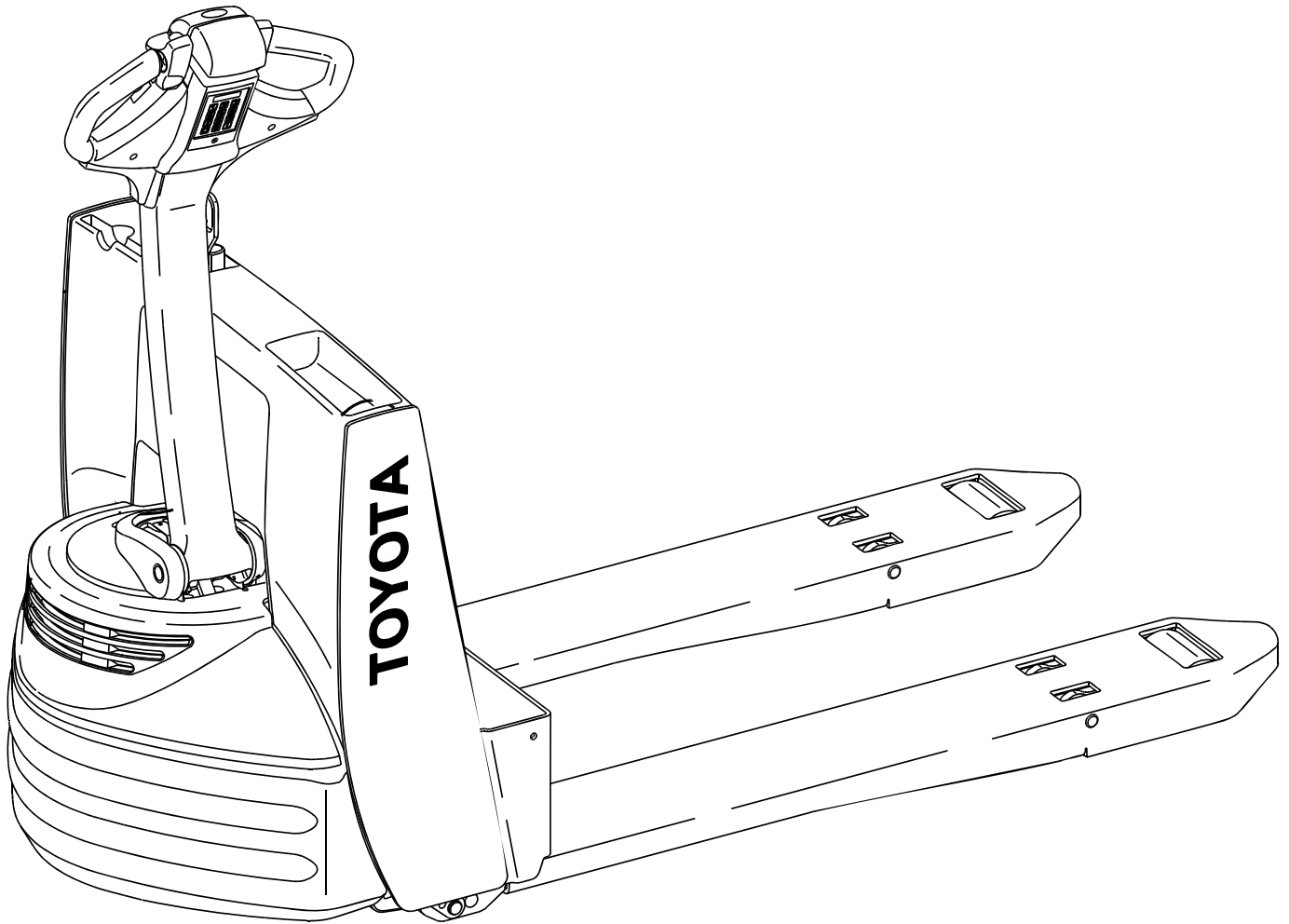


Replacement Parts
for
Toyota 7HBW23 Walkie





800-462-2370

www.SuperStoresService.com

Toyota 7HBW23 Walkie

Toyota 7HBW23 Walkie

800-462-2370
www.SuperStoresService.com



Contents

Wheels

[Quick Wheel Lookup](#) 4

Electrical Systems Components

[Battery Charger, Motor Controllers](#) 6

Drive Unit/Brake

[Drive Motor Parts, Brake Assembly](#) 8

Control Handle

[Arm, Throttle Assembly](#) 10

Hydraulic System

[Hydraulic System](#) 12

Frame and Undercarriage

[Frame and Undercarriage](#) 14

Quick Wheel Lookup

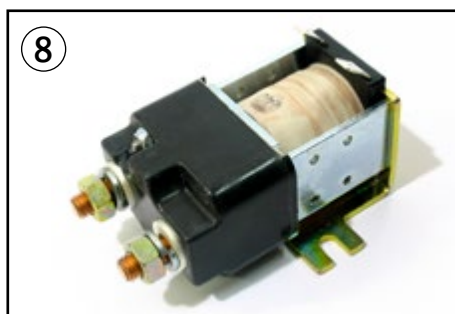
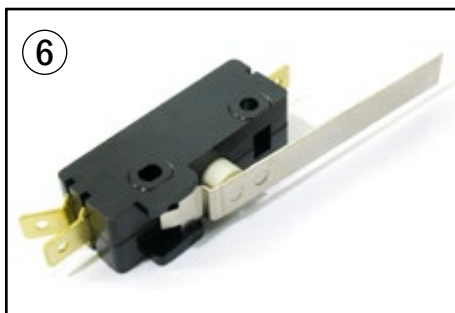
Quick Wheel Lookup

[back to Content page](#)

| OEM # | Description | Wheel OD in/mm | Tread Width in/mm | Wheel OD in/mm | Tread Width in/mm | Bearing ID in/mm | Bearing # | Material/Color |
|----------------------------------|--|----------------|-------------------|----------------|-------------------|------------------|-------------|---------------------------|
| TO 00590-47623-71 | Load Wheel, Poly 95A | 3.25 / 82.5 | 4.00 / 101.5 | 4.50 / 114 | 2.047 / 52 | 0.984 / 25 | | Duraron Poly 95A , Scotch |
| TO 00590-47623-71-A | Load Wheel Assembly, Poly 95A | 3.25 / 82.5 | 4.00 / 101.5 | 4.50 / 114 | 2.047 / 52 | 0.984 / 25 | BS 6205 2RS | Duraron Poly 95A , Scotch |
| TO 00590-47625-71 | Load Wheel, Poly 97A | 3.25 / 82.5 | 4.00 / 101.5 | 4.50 / 114 | 2.047 / 52 | 0.984 / 25 | | XL Poly 97A , White |
| TO 00590-47625-71-A | Load Wheel Assembly, Poly 97A | 3.25 / 82.5 | 4.00 / 101.5 | 4.50 / 114 | 2.047 / 52 | 0.984 / 25 | BS 6205 2RS | XL Poly 97A , White |
| GWK-7HBW23-LW | Load Wheel Kit, Includes (2)Load Wheels, Bearings, Axles & Fasteners | 3.25 / 82.5 | 4.00 / 101.5 | 4.50 / 114 | 2.047 / 52 | 0.984 / 25 | BS 6205 2RS | Duraron Poly 95A , Scotch |
| GWK-7HBW23-LW-XL | Load Wheel Kit, Includes (2)Load Wheels, Bearings, Axles & Fasteners | 3.25 / 82.5 | 4.00 / 101.5 | 4.50 / 114 | 2.047 / 52 | 0.984 / 25 | BS 6205 2RS | XL Poly 97A , White |
| TO 00590-46883-71 | Drive Tire, Rubber Smooth Flat | 10.00 / 254 | 4.00 / 101.5 | 5.00 / 127 | 6.50 / 165 | | | Rubber , Black |
| TO 00590-43409-71 | Drive Tire Assembly, Rubber Smooth Flat, Includes Hub | 10.00 / 254 | 4.00 / 101.5 | 5.00 / 127 | 6.50 / 165 | | | Rubber , Black |
| TO 00590-46881-71 | Drive Tire, Poly Smooth Flat | 10.00 / 254 | 4.00 / 101.5 | 5.00 / 127 | 6.50 / 165 | | | Poly 87A, Red |
| TO 00590-46884-71 | Drive Tire Assembly, Poly Smooth Flat, Includes Hub | 10.00 / 254 | 4.00 / 101.5 | 5.00 / 127 | 6.50 / 165 | | | Poly 87A, Red |
| TO 000590-43421-71 | Hub | | | | | | | |
| TO 00590-43318-71 | Duraron 95A Poly Caster Wheel Assembly | 2.50 / 63.5 | 2.00 / 51 | 2.375 / 60 | 1.37 / 35 | 0.50 / 12.7 | BS 1621 2RS | Duraron Poly 95A , Scotch |
| TO 00590-43318-71-XL | XL 97A Poly Caster Wheel Assembly | 2.50 / 63.5 | 2.00 / 51 | 2.375 / 60 | 1.37 / 35 | 0.50 / 12.7 | BS 1621 2RS | XL Poly 97A , White |
| TO 00590-43303-71 | Caster Assembly Complete | | | | | | | |



Electrical Systems Components

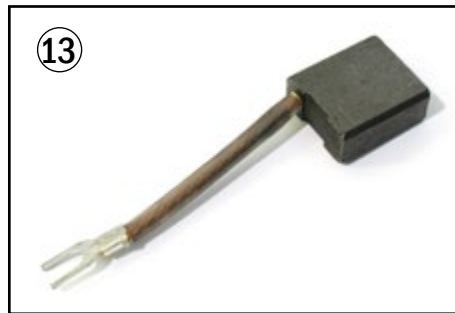
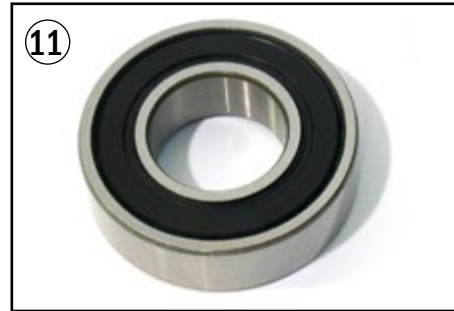
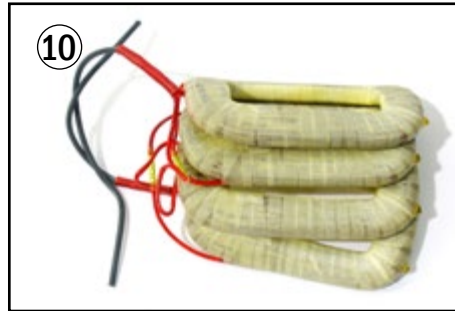
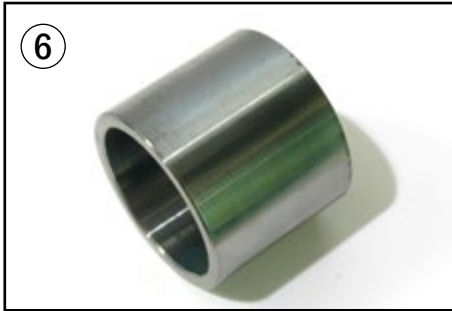


Electrical Systems Components

[back to Content page](#)

| Item | Part No. | Description |
|------|-------------------|--------------------------------------|
| 1 | TO 00590-40800-71 | Battery Connector SB175 Gray |
| | TO 00590-05125-71 | Battery Connector SB350 Gray |
| | TO 00590-40975-71 | Battery Connector SB175 Yellow |
| | TO 00590-47621-71 | Battery Connector SB350 Yellow |
| | TO 00590-40416-71 | Battery Connector SB175 Red |
| | TO 00590-05126-71 | Battery Connector SB350 Red |
| | TO 00590-40951-71 | Battery Connector SB175 Blue |
| | TO 00590-47622-71 | Battery Connector SB350 Blue |
| 2 | AN 256 | Disconnect Handle, Inc Screws & Nuts |
| 3 | TO 00590-40983-71 | Rocker On/Off Switch |
| 4 | TO 00590-40978-71 | Key Switch, Inc. 2 Keys (Not SHown) |
| 5 | TO 00590-43472-71 | Switch |
| 6 | TO 00590-43475-71 | Lift Limit Switch |
| 7 | TO 00590-47055-71 | Controller |
| 8 | TO 00590-43450-71 | Main Contactor |
| 9 | TO 00590-40042-71 | Relay |
| 10 | TO 00590-43457-71 | Circuit Breaker |
| 11 | TO 00590-41941-71 | Horn |
| 12 | TO 00590-47605-71 | Main Harness |
| 13 | TO 00590-43482-71 | Head Harness |
| 14 | TO 00590-43555-71 | Fuse, 10 Amp |
| 15 | TO 00590-43559-71 | Fuse, 80 Amp |
| 16 | TO 00590-43337-71 | Battery Charger, 24 Volt |

Drive Unit - Drive Motor Parts, & Brake

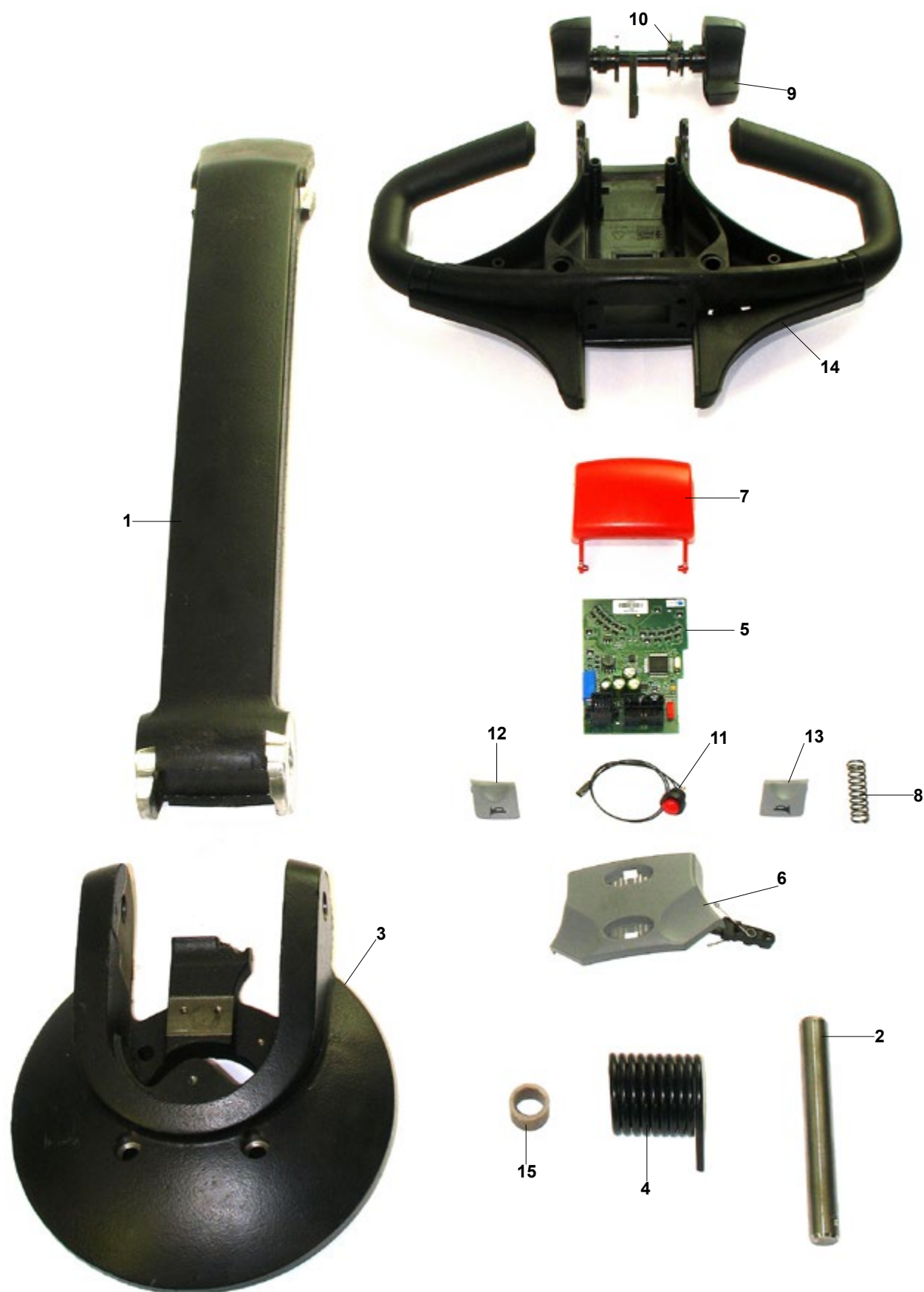


Drive Unit - Drive Motor Parts, & Brake

[back to Content page](#)

| Item | Part No. | Description |
|------|-------------------|---|
| 1 | TO 00590-43295-71 | Drive Unit & Motor Assembly (not shown) |
| 2 | TO 00590-43396-71 | Drive Axle |
| 3 | TO 00590-43428-71 | Seal |
| 4 | TO 00590-43429-71 | Bearing, Drive Axle |
| 5 | TO 00590-43430-71 | Spacer |
| 6 | TO 00590-43373-71 | Armature (not shown) |
| 7 | TO 00590-43375-71 | Seal |
| 8 | TO 00590-43404-71 | Shim |
| 9 | TO 00590-43403-71 | Bearing |
| 10 | TO 00590-43401-71 | Field Coil |
| 11 | TO 00590-43364-71 | Bearing |
| 12 | TO 00590-43370-71 | Brush Holder |
| 13 | TO 00590-43372-71 | Brush |
| 14 | TO 00590-43371-71 | Spring |
| 15 | TO 00590-43369-71 | Cover |
| 16 | TO 00590-43367-71 | Band |
| 17 | TO 00590-43446-71 | Brake Assembly (not shown) |

Control Handle - Arm, Throttle Assembly



Control Handle - Arm, Throttle Assembly

[back to Content page](#)

| Item | Part No. | Description |
|------|-------------------|-------------------------------------|
| 1 | TO 00590-47607-71 | Tiller |
| 2 | TO 00590-43296-71 | Pin, Tiller |
| 3 | TO 00590-43284-71 | Mount, Stem |
| 4 | TO 00590-43290-71 | Return Spring |
| 5 | TO 00590-47051-71 | Control Card |
| 6 | TO 00590-42462-71 | Lift Lower Button |
| 7 | TO 00590-47054-71 | Reverse Button |
| 8 | TO 00590-42420-71 | Spring |
| 9 | TO 00590-43360-71 | Thumb Wheel Assembly |
| 10 | TO 00590-42422-71 | Spring |
| 11 | TO 00590-42456-71 | Horn Switch |
| 12 | TO 00590-42429-71 | Horn Button, Right |
| 13 | TO 00590-42430-71 | Horn Button Left |
| 14 | TO 00590-43298-71 | Handle |
| 15 | TO 00590-43300-71 | Bushing |
| 16 | TO 00590-46381-71 | Control Handle Assembly (Not Shown) |

Hydraulic System

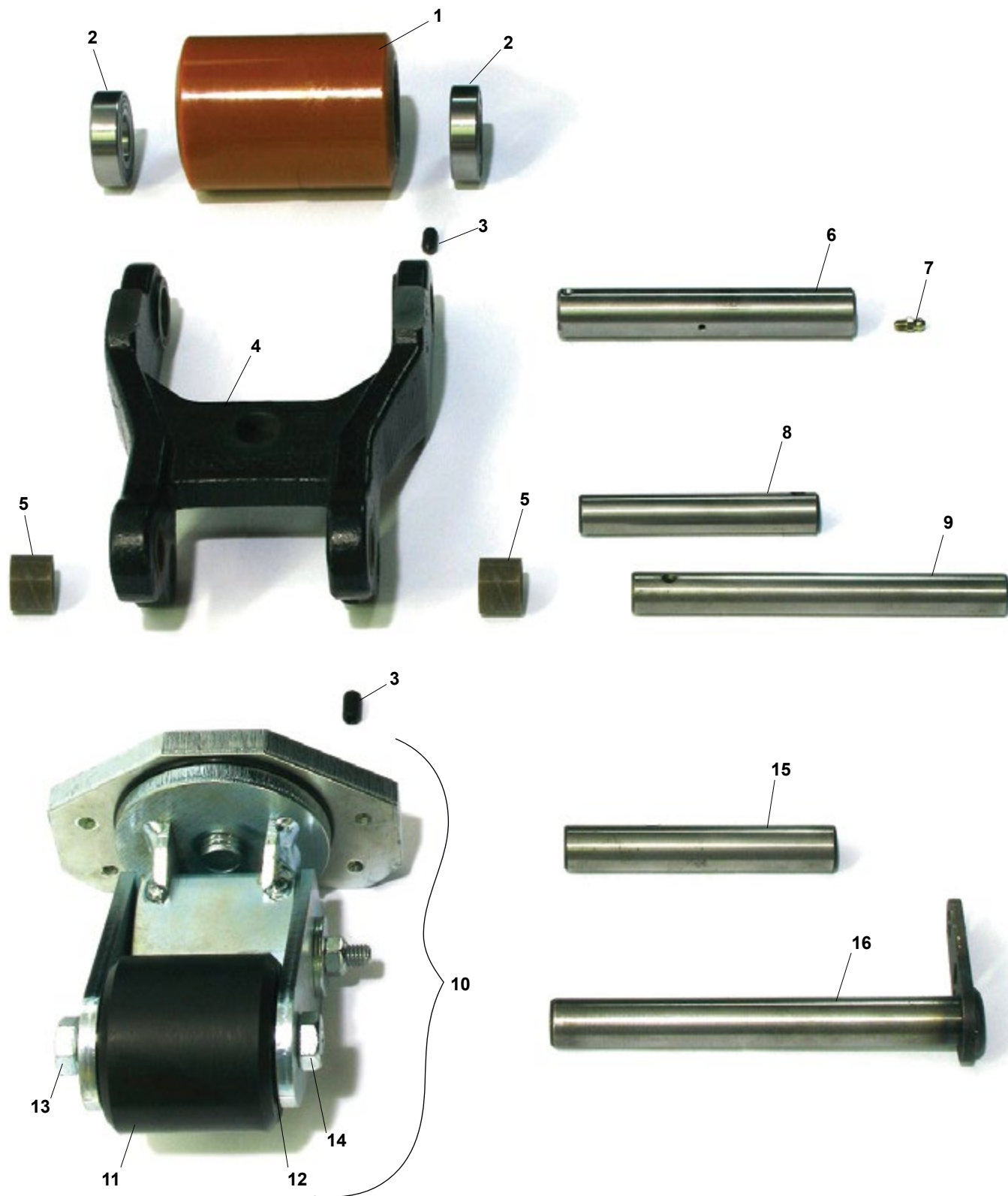


Hydraulic System

[back to Content page](#)

| Item | Part No. | Description |
|------|-------------------|----------------------------|
| 1 | TO 00590-43461-71 | Lift Pump & Motor Assembly |
| 2 | TO 00590-43392-71 | Pump Motor Assembly |
| 3 | TO 00590-43393-71 | Brush & Spring Kit |
| 4 | TO 00590-43405-71 | Bearing |
| 5 | TO 00590-43508-71 | Pump Kit |
| 6 | TO 00590-43462-71 | Solenoid |
| 7 | TO 00590-43510-71 | Release Valve Assembly |
| 8 | TO 00590-43503-71 | Lift Cylinder Assembly |
| 9 | TO 00590-40809-71 | Seal Kit, Lift Cylinder |

Frame and Undercarriage



[back to Content page](#)

Frame and Undercarriage

| Item | Part No. | Description | |
|------|----------------------|------------------------------------|--|
| 1 | GWK-7HBW23-LW | Load Wheel Kit, Poly 95A | Includes Items 1, 2, 3, 6 and 7 |
| | GWK-7HBW23-LW-XL | Load Wheel Kit, Poly 97A | Includes Items 1, 2, 3, 6 and 7 |
| | TO 00590-47623-71 | Poly Load wheel, Poly 95A | |
| | TO 00590-47623-71-A | Poly Load Wheel Assembly, Poly 95A | Includes Bearings |
| | TO 00590-47625-71 | Poly Load Wheel, Poly 97A | |
| | TO 00590-47625-71-A | Poly Load Wheel Assembly, Poly 97A | Includes Bearings |
| | 2 | TO 00590-43299-71 | Bearing |
| 3 | TO 00590-43271-71 | Set Screw | |
| 4 | TO 00590-43543-71 | Wheel Fork | |
| 5 | TO 00590-43276-21 | Bushing | |
| 6 | TO 00590-43547-71 | Load Wheel Axle | |
| | TO 00590-43548-71 | Load Wheel Axle | Freezer/Corrosion Resistant (Greaseable) |
| 7 | TO 00590-00019-71 | Grease Fitting | |
| 8 | TO 00590-43274-71 | Pin | |
| | TO 00590-43275-71 | Pin | Freezer/Corrosion Resistant |
| 9 | TO 00590-43326-71 | Pivot Pin | |
| | TO 00590-43325-71 | Pivot Pin | Freezer/Corrosion Resistant |
| 10 | TO 00590-43303-71 | Caster Assembly | Includes Items 11-14 |
| 11 | TO 00590-43318-71 | Poly Caster Wheel Assembly, 95A | Durometer, Includes Bearings |
| | TO 00590-43318-71-XL | Poly Caster Wheel Assembly, 97A | Durometer, Includes Bearings |
| 12 | TO 00590-43317-71 | Bearing | |
| 13 | TO 00590-43319-71 | Axle Screw | |
| 14 | TO 00590-43315-71 | Nut | |
| 15 | TO 00590-43358-71 | Pin | |
| | TO 00590-43357-71 | Pin | Freezer/Corrosion Resistant |
| 16 | TO 00590-43332-71 | Pin | |
| | TO 00590-43342-71 | Pin | Freezer/Corrosion Resistant |

800-462-2370
www.SuperStoresService.com

