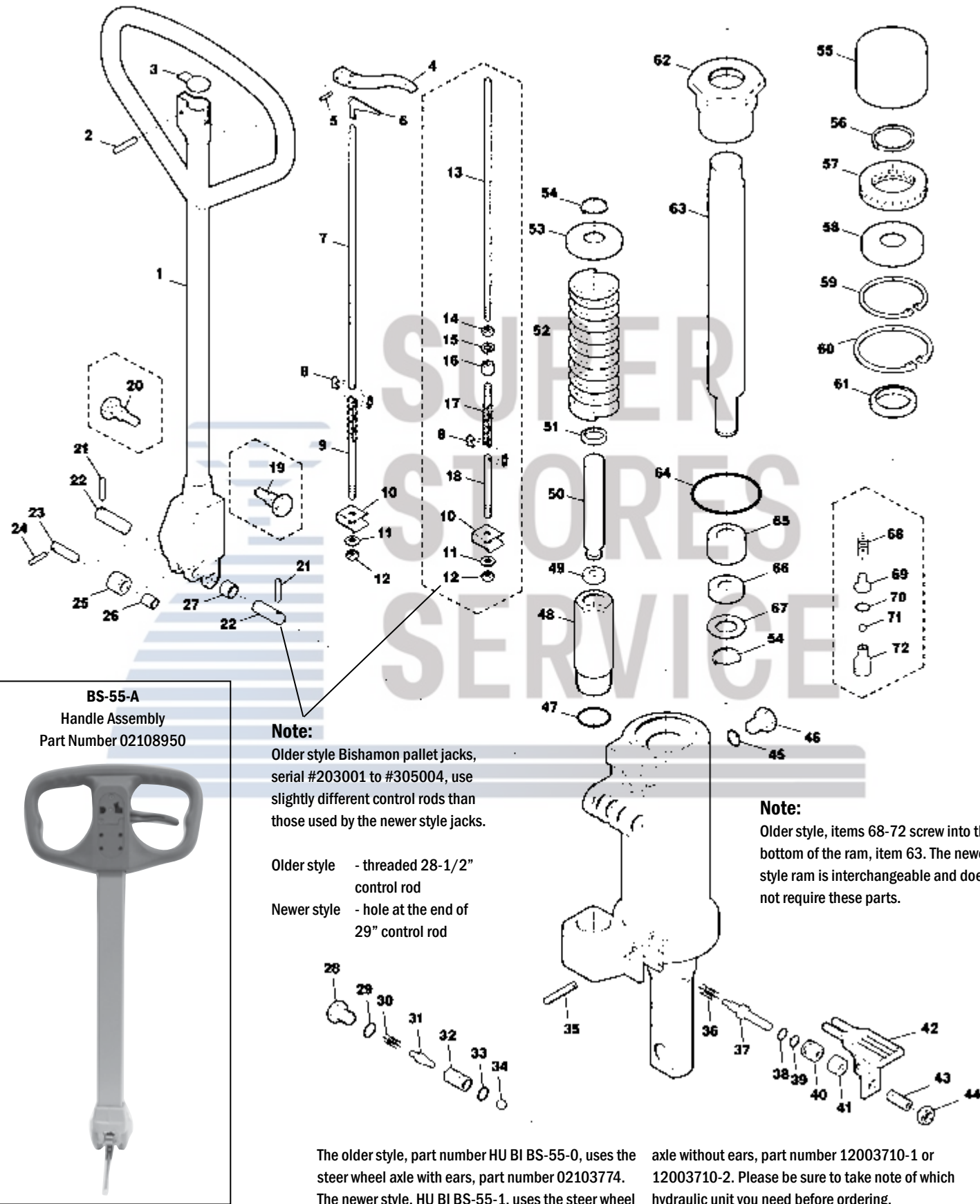


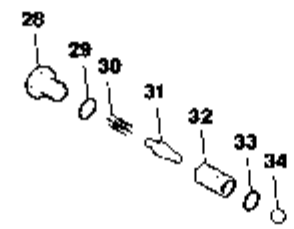
Bishamon BS-55 Hydraulic Unit



Note:
Older style Bishamon pallet jacks, serial #203001 to #305004, use slightly different control rods than those used by the newer style jacks.

Older style - threaded 28-1/2" control rod
Newer style - hole at the end of 29" control rod

Note:
Older style, items 68-72 screw into the bottom of the ram, item 63. The newer style ram is interchangeable and does not require these parts.



The older style, part number HU BI BS-55-0, uses the steer wheel axle with ears, part number 02103774. The newer style, HU BI BS-55-1, uses the steer wheel axle without ears, part number 12003710-1 or 12003710-2. Please be sure to take note of which hydraulic unit you need before ordering.

Bishamon BS-55 Hydraulic Unit

Item	Part No.	Description
1	02103814	Handle Frame
	02103804	Handle Assembly
	02108950	Handle Assembly - Newer Style
2	90980622	Roll Pin
3	52103804	Handle Cap
4	12003943	Control Lever
5	90980514	Roll Pin
6	12003953	Locking Lever
7	12103964	Control Rod (Newer Style, Serial # 305005 and Higher)
8	80839000	Master Link
9	02008474	Chain W/ Rod
10	52003983	Spring Clip
11	90930708	Washer
12	90931508	Adjusting Nut
13	12103963	Control Rod (Old Style to Serial # 305004)
14	90930106	Nut
15	90930506	Lock Washer
16	12003973	Nut
17	80830004	Chain
18	12003983	Lower Control Rod
19	12003913	Handle Bolt (Right Hand Thread)
20	12003923	Handle Bolt (Left Hand Thread)
21	90820530	Roll Pin
22	12003914	Handle Pin
23	12003853	Pin
24	90980325	Roll Pin
25	12003843	Roller
26	81710121	Bushing
27	81916201	Bushing
28	12003463	Screw Plug
29	A,B 80800411	O-Ring
30	A 52003493	Spring
31	A 12003473	Valve
32	A 12003483	Valve Seat
33	A,B 80800005	O-Ring
34	A,B 80843022	Ball
35	90980835	Roll Pin
36	A 52003463	Spring
37	12003493	Release Pin
38	A,B 80800002	O-Ring

Item	Part No.	Description
39	A,B 80800010	O-Ring
40	12003503	Release Pin Guide
41	52003513	Rubber Bushing
42	12003513	Foot Pedal
43	90962820	Set Screw
44	90930308	Nut
45	A,B 80800260	O-Ring
46	12003533	Filler Plug
47	A,B 80800023	O-Ring
48	12003633	Pump Cylinder
49	A,B 52003643	U-Cup
50	12003645	Piston
51	A,B 52003633	Scraper
52	52103653	Spring
53	12003653	Spring Cap
54	80848009	Snap Ring
55	12003604	Bearing Cup
56	80845015	Snap Ring
57	81251205	Thrust Bearing
58	12003593	Thrust Collar
59	80846031	Snap Ring
60	80846037	Snap Ring
61	A,B 52103553	Scraper
62	12103553	Top Nut
63	12049564	Ram
64	A,B 80800128	O-Ring
65	12013574	Piston Bushing
66	A,B 52013563	U-Cup
67	12003583	Washer
68	52103663	Spring
69	12103613	Ball Seat
70	A,B 80800006	O-Ring
71	A 80843015	Ball
72	12103624	Relief Seat
KITS	A 52103704-Super	Super Seal Kit
KITS	B 52103704	Complete Seal Kit
	HU BI BS-55-0	Rebuilt Hydraulic Unit (Older Model) - Exchange
	HU BI BS-55-1	Rebuilt Hydraulic Unit (Newer Model) - Exchange