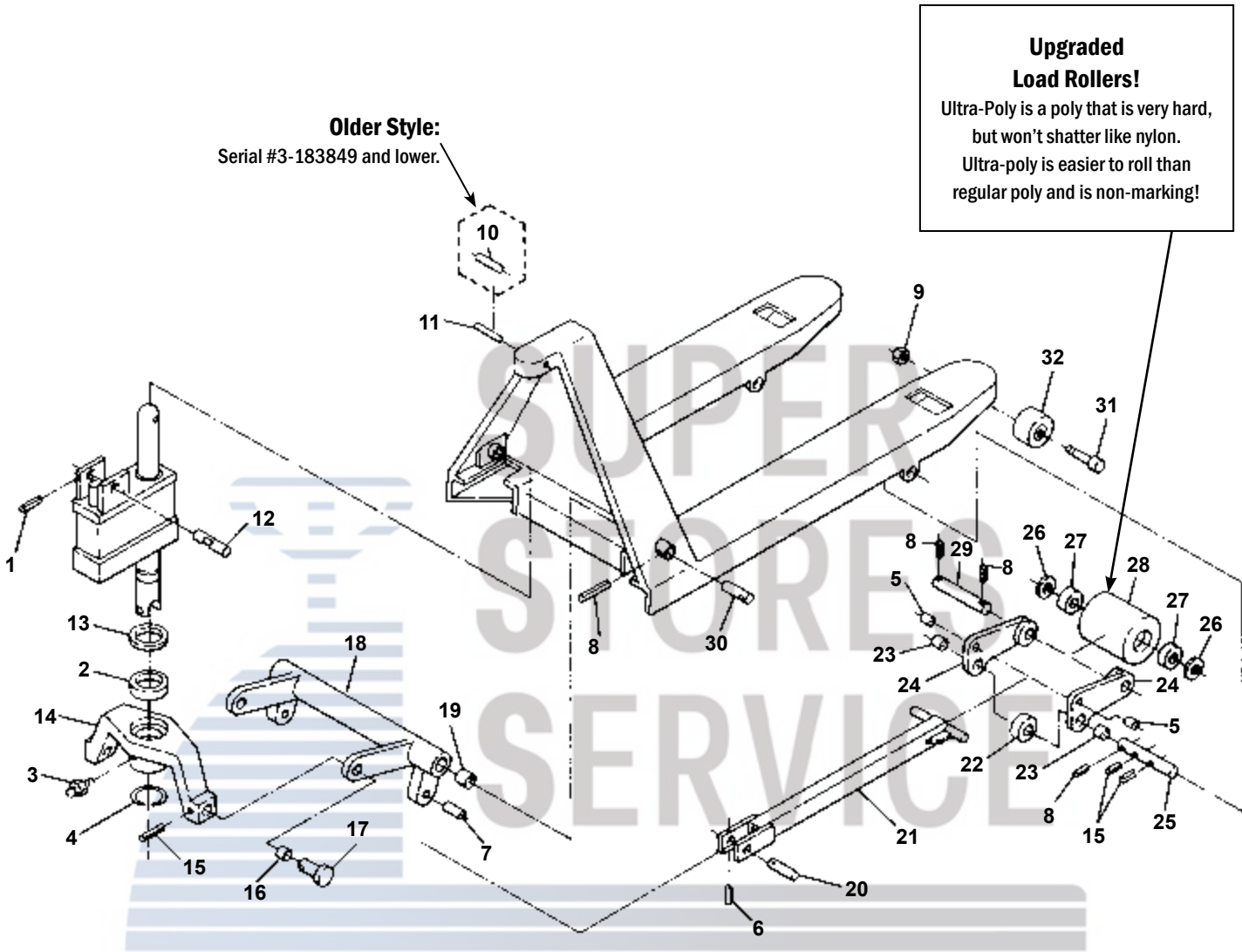


Crown PTH Frame

Serial #3-118400 and higher



Key differences:

- Push rods -**
PTH has ears, PTH50 has no ears.
- Lifting Link -**
PTH pins (item 20) are removable, PTH50 pins are welded.
- Load rollers -**
PTH - 3-1/4" diameter, PTH50 - 3" diameter.
- Traverse -**
PTH has long ears, PTH50 has a lip and short, heavy-duty ears.

Crown Roll Pin Kits

Contain enough roll pins to repair two newer style Crown PTH pallet jacks.

Crown PTH Frame

Serial #3-118400 and higher

Item	Part No.	Description
1	50000-015	Roll Pin
2	55018-001	Traverse Bearing
3	54011-001	Lube Fitting
4	50012-024	Snap Ring
5	41201	Bushing
6	50000-016	Roll Pin
7	41139	Bushing
8	50000-017	Roll Pin
9	50008-025	Nut
10	50000-034	Roll Pin
11	50000-036	Roll Pin
12	41252	Handle Axle
13	79850	Washer
14	41249	Traverse
15	50000-012	Roll Pin
16	41138	Bushing
17	41149	Shoulder Pin
18	41129-002	Lifting Link, 27" Wide Jack
19	41137	Bushing
20	41148	Pin
21	41141-002	Push Rod, 36" Forks
	41141-004	Push Rod, 42" Forks
	41141-006	Push Rod, 48" Forks

Item	Part No.	Description
22	41127	Exit Roller
23	55007-001	Bushing
24	41241	Load Roller Bracket (Pair) (Includes Items 5 and 23)
25	41126	Pivot Axle
26	41203	Washer
27	65081-020	Bearing
28	82283-1-D	Load Roller Assembly, Red Ultra-Poly On Aluminum Hub W/ Bearings
	82283-1	Load Roller Assembly, Black Ultra-Poly On Steel Hub W/ Bearings
	82283-2	Load Roller Assembly, Nylon W/ Bearings
	82283-3	Load Roller Assembly, Steel W/ Bearings
	GWK-PTH-LW	Load Wheel Kit, (2) Black Ultra-Poly (70D), Load Roller Assemblies, W/ Bearings, Axles & Fasteners
	GWK-PTH-CK	Complete Wheel Kit, (2) Ultra-Poly Load Roller Assemblies (70D), (2) Poly Steer Wheel Assemblies, W/ Bearings, Axles & Fasteners
29	41202	Load Roller Axle
30	41140	Lifting Link Pin
31	50007-021	Bolt
32	82203	Entry Roller
KITS	CR RPK	Roll Pin Kit

Load Wheel Kit



Note:
Please confirm measurements before ordering:
Load Roller 3.250" Diameter
Steer Wheel 8" Diameter

Complete Wheel Kit

