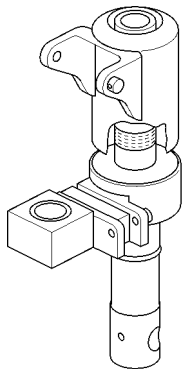
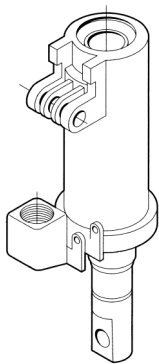


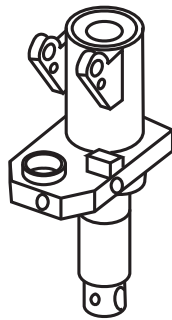
# Hydraulic Unit Identification



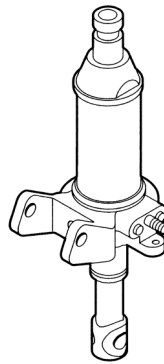
Atlas Zenith



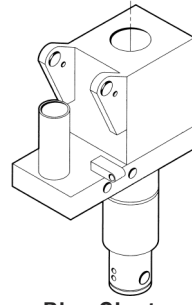
Bishamon  
BS-55



Blue Giant  
MT-50



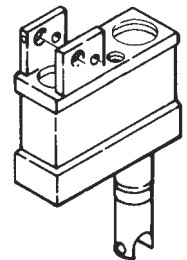
Blue Giant  
PT-50/55



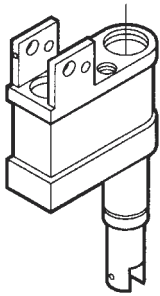
Blue Giant  
ROI-5/55  
MTS 2000



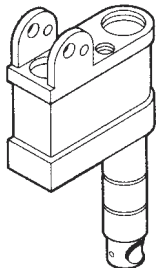
BT L 2000/  
L 2300



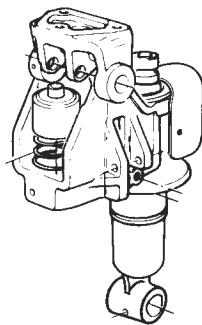
Crown  
Later PTH



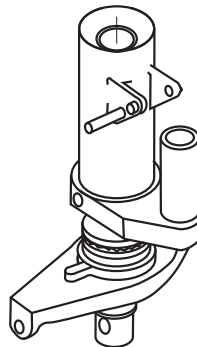
Crown  
Older PTH



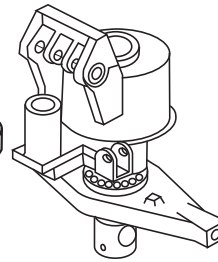
Crown  
PTH50



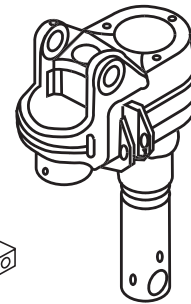
Hu-Lift HP25L



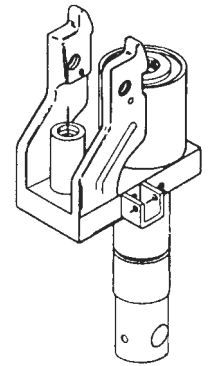
Interthor  
K77/K85



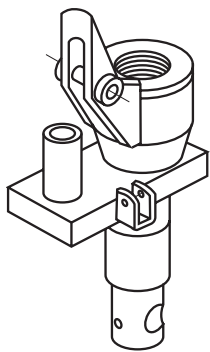
Jet A, L and J



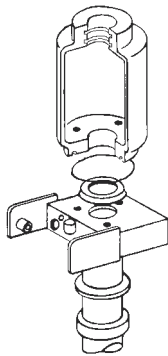
Jet W



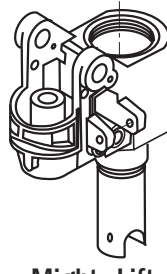
Lift-Rite L-50



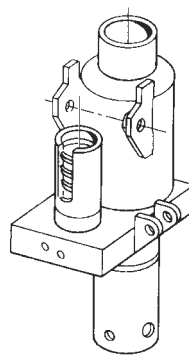
Lift-Rite L-55



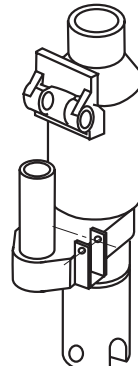
Magnum 5000



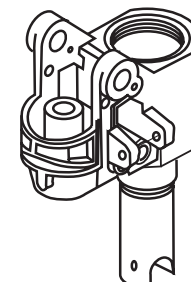
Mighty Lift  
5500



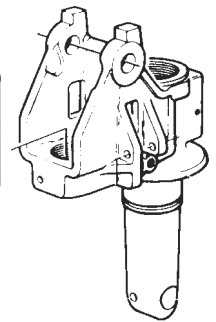
Mobile ML55



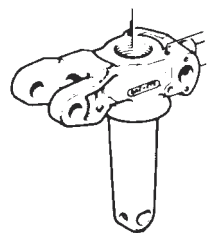
Mobile MLX55



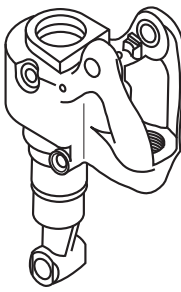
Mobile  
ECO I-55



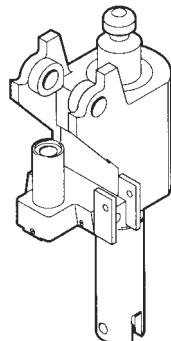
Multiton  
Hand Control



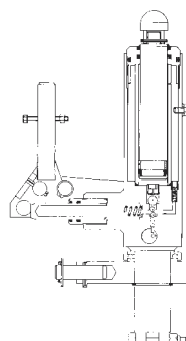
Multiton  
Foot Control



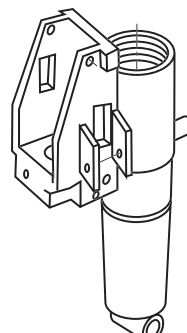
Multiton  
TM 55



Pallet Mule  
AA5000/AA5500



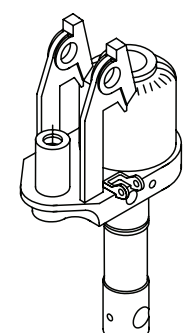
Palletmaster  
HSW



Pramac GS22



Rol-Lift  
Series T and E



Valu-Jack  
6600

\*Non-discounting item

Prices subject to change without notice. All manufacturers' names, part numbers and descriptions are used for reference purposes only. We do not imply that any parts are the products of a particular manufacturer. Copyright © 2008 by GPS, Inc. All rights reserved.