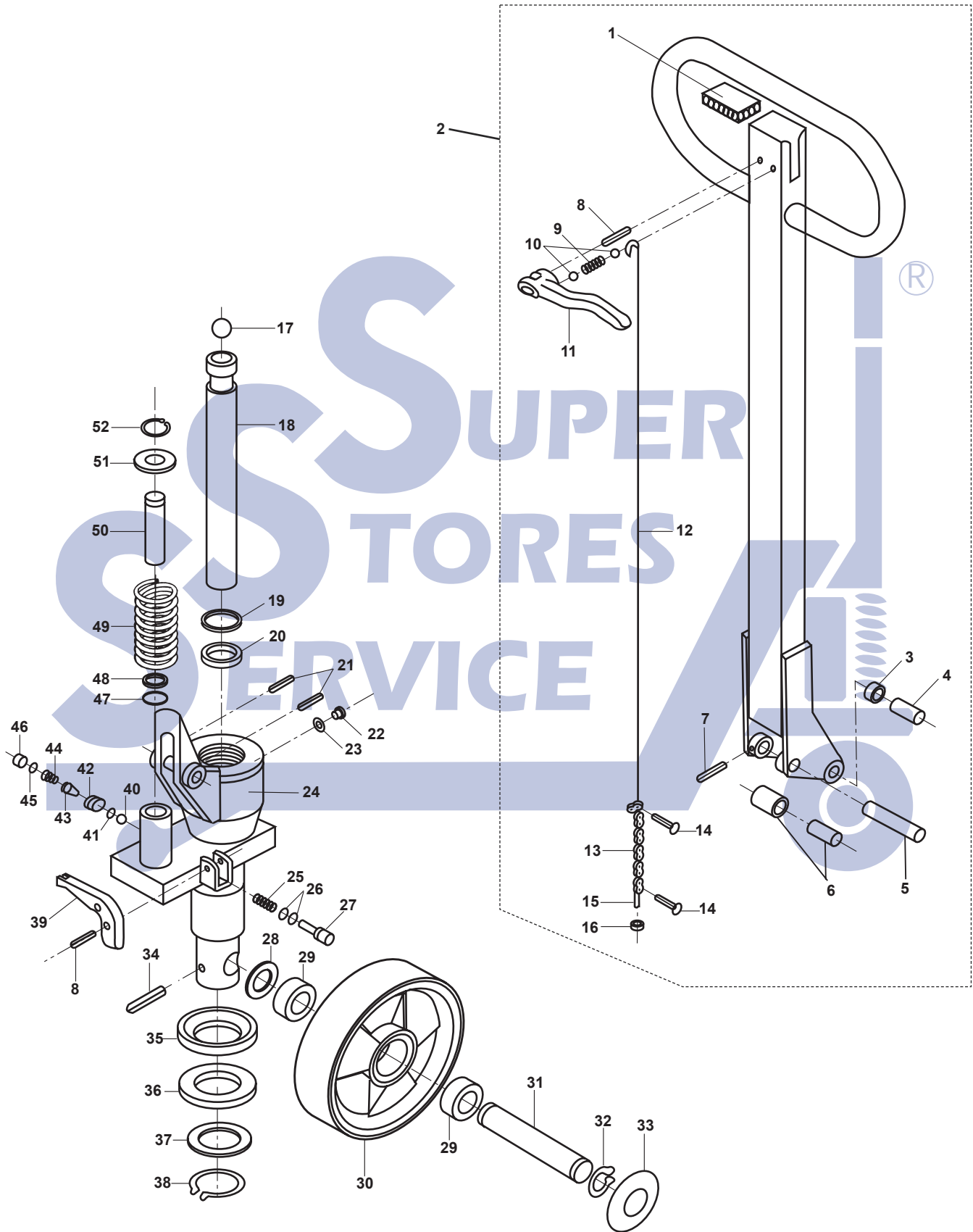


# Lift-Rite (Big Joe) LRP 5000 Hydraulic Unit



# Lift-Rite (Big Joe) LRP 5000 Hydraulic Unit

Item	Part No.	Description	List Price
1	PL20274E	Handle Cap	\$4.00
2	PL20276	Handle Assembly (Incl. Items 1-16)	\$99.00
3	PL20306	Bushing	\$3.00
4	PL20275	Handle Pin	\$7.50
5	PL20274P	Pin	\$6.00
6	PL20274RA	Roller Complete with Bushing	\$12.00
7	PL20274RB	Split Pin	\$0.50
8	PL10269	Split Pin	\$0.50
9	PL20274C	Spring	\$3.00
10	PL10254	Ball	\$1.50
11	PL20274BD	Control Lever	\$14.00
12	PL20274A	Control Rod	\$18.00
13	PL20272	Chain	\$10.00
14	PL10273	Pin	\$1.50
15	PL10270	Lower Control Rod	\$10.00
16	PL10271	Adjusting Nut	\$0.50
17	10254	Ball	\$1.50
18	20243	Ram Piston	*49.00
19	A C 20249	Top Seal	\$16.00
20	A C 10246	U-Cup	\$12.00
21	20274S	Split Pin	\$0.50
22	10267	Filler Plug	\$1.00
23	A C 10259	O-Ring	\$1.00
24	20277	Hydraulic Unit	Special Order
25	B C 10258	Spring	\$2.00
26	A C 10259	O-Ring	\$1.00
27	B C 10260	Release Pin	\$12.00
28	10239	Washer	\$1.00
29	10238-D	Ball Bearing	\$5.00

Item	Part No.	Description	List Price
30	20236-B-A-HD	Steer Wheel Assembly, Red Ultra Poly On Aluminum Hub W/ Bearings	\$55.00
	20236-B-A-ST	Steer Wheel Assembly, Black Poly On Nylon Hub W/ Bearings	\$38.00
	20236N	Steer Wheel Assembly, Nylon W/ Bearings	\$36.00
	20236S	Steer Wheel Assembly, Steel W/ Bearings	\$59.00
	GWK-LRP-CK	Complete Wheel Kit, (2) Load Roller Assy, (2) Steer Assy W/ Bearings, Axles and Fasteners	\$124.95
31	10240-E	Steer Wheel Axle, 25mm OD	\$12.00
32	10237	Snap Ring	\$0.50
33	10236-C	Hub Cap	\$7.50
34	10242	Roll Pin	\$0.50
35	10233	Spacer	\$8.00
36	10234	Thrust Bearing	\$12.00
37	10234-A	Washer	\$5.00
38	10235	Snap Ring	\$1.00
39	10268	Release Lever	\$18.00
40	A B C 10261-A	Ball	\$1.00
41	A B C 10256	O-Ring	\$3.00
42	B C 20262	Cone Valve	\$14.00
43	A B C 20261	Cone	\$12.00
44	B C 10264	Spring	\$1.00
45	A C 10265	O-Ring	\$1.00
46	B C 10266	Screw Plug	\$5.00
47	A C 10252	U-Cup	\$12.00
48	A C 10251	Scraper	\$5.00
49	20253	Handle Return Spring	\$12.00
50	10250	Pump Piston Assembly	\$24.00
51	10250B	Spring Cap	\$6.00
52	10250C	Snap Ring	\$1.00

KITS A	20278	Seal Kit	\$39.00
KITS B	20279	Seal Kit (Ball and Valve Kit)	\$19.00
KITS C	20280	Seal Kit	\$49.00

HU LF L55	Rebuilt Hydraulic Unit - Exchange	*139.00
-----------	-----------------------------------	---------

## Complete Wheel Kit



\*Non-discounting item

Prices subject to change without notice. All manufacturers' names, part numbers and descriptions are used for reference purposes only. We do not imply that any parts are the products of a particular manufacturer. Copyright © 2008 by GPS, Inc. All rights reserved.