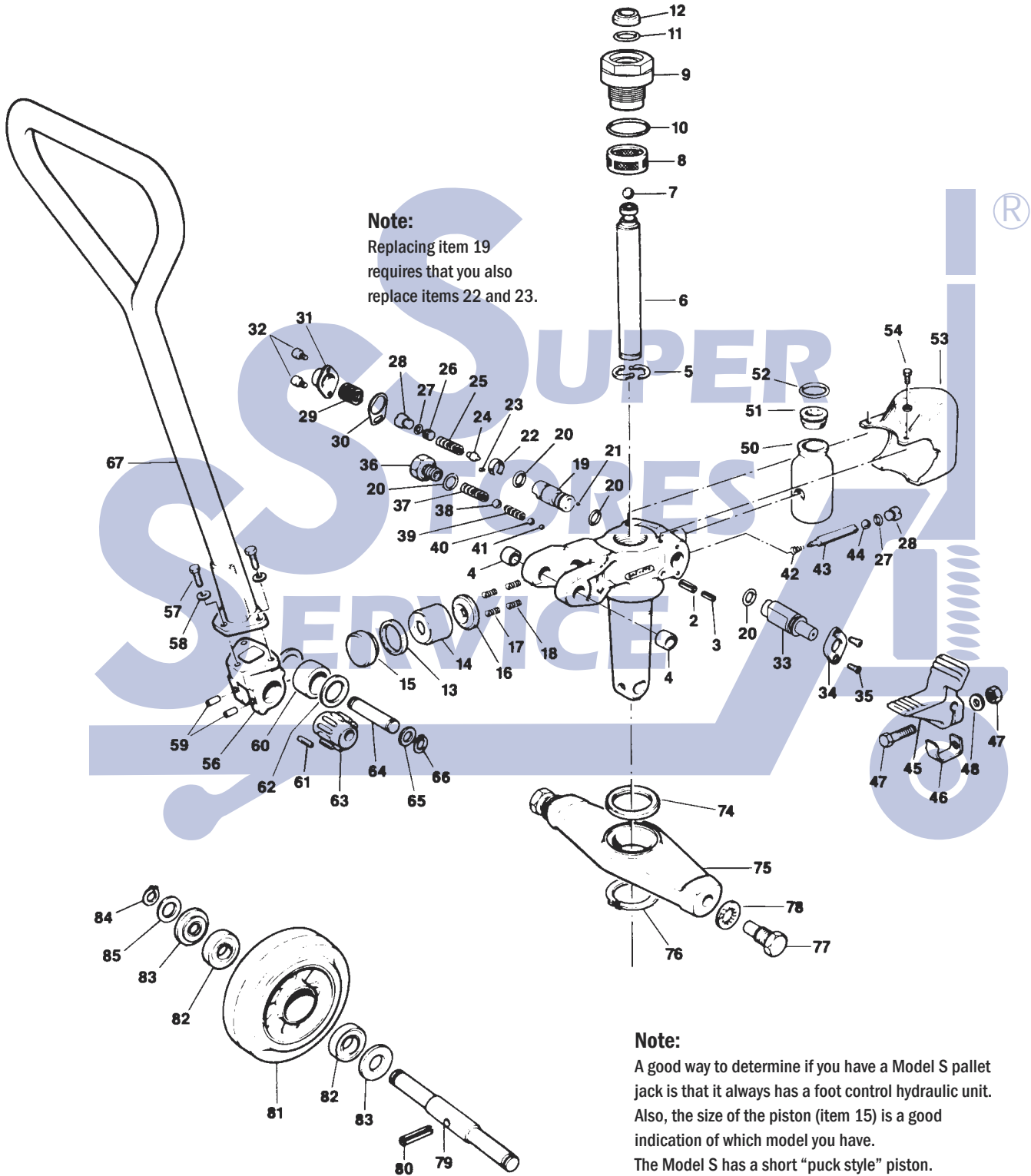


# Multiton S Foot Control Hydraulic Unit



**Note:**  
 Replacing item 19  
 requires that you also  
 replace items 22 and 23.

**Note:**  
 A good way to determine if you have a Model S pallet  
 jack is that it always has a foot control hydraulic unit.  
 Also, the size of the piston (item 15) is a good  
 indication of which model you have.  
 The Model S has a short "puck style" piston.

# Multiton S Foot Control Hydraulic Unit

Item	Part No.	Description	List Price
2	MU 192151	Roll Pin	\$0.50
3	MU 192125	Roll Pin	\$0.50
4	MU 23163	Bushing	\$4.00
5	MU 820620	Locking Ring	\$3.50
6	MU 20178	Ram	*\$49.00
7	MU 06750071	Ball	\$3.00
8	MU 20599	Filter	Not Available
9	MU 20179	Top Nut	Not Available
10	A B MU 100975	O-Ring	\$2.00
11	A B MU 102176	O-Ring	\$3.00
12	A B MU 20369	Scraper	\$5.00
13	A B MU 26381	Seal	\$8.00
14	A B MU 20238	Diaphragm	\$15.00
15	MU 26382	Piston	\$40.00
16	MU 20174	Washer	\$7.00
17	A MU 3647	Spring	\$5.00
18	A MU 20594	Spring	\$2.00
19	MU 19740	Valve	*\$55.00
20	A B MU 100997	O-Ring	\$1.50
21	A MU 820207	Ball	\$1.50
22	MU 20597	Spring Clip	\$2.00
23	MU 190953	Rivet	\$0.50
24	MU 19744	Valve	\$12.00
25	A MU 19750	Spring	\$2.00
26	MU 19745	Set Screw	\$3.00
27	A B MU 100988	O-Ring	\$3.00
28	MU 21573	Screw Plug	\$12.00
29	MU 19349	Spring	\$2.00
30	MU 20387	Locking Ring	\$2.00
31	MU 20194	Cover	\$8.00
32	MU 190691	Bolt	\$1.00
33	MU 20177	Pedal Shaft	*\$24.00
34	MU 20193	Shaft Lock	\$6.00
35	MU 190906	Screw	\$1.00
36	MU 20200	Screw Plug	\$5.00
37	A MU 20188	Spring	\$2.00
38	A MU 820215	Ball	\$2.00
39	A MU 19350	Spring	\$2.00
40	A MU 820212	Ball	\$2.50
41	A MU 820206	Ball	\$2.00
42	MU 20377	Spring	\$1.50
43	MU 20175	Cam	\$15.00
44	A MU 820209	Ball	\$1.00

Item	Part No.	Description	List Price
45	MU 20191	Pedal	\$24.00
46	A B MU 20595	Spring	\$10.00
47	MU 190049	Bolt and Nut	\$2.00
48	MU 0565005	Lock Washer	\$0.50
50	A MU 21660	Reservoir	\$18.00
51	A MU 21675	Filler Plug	\$8.00
52	A B MU 101003	O-Ring	\$3.00
53	MU 20245	Cowling	Not Available
54	A B MU 04459023	Screw	\$0.50
56	MU 19819	Handle Bracket	Not Available
57	MU 04059078	Bolt	\$1.00
58	MU 192302	Lock Washer	\$0.50
59	MU 19812	Pin	\$5.00
60	MU 36591	Bearing Sleeve	\$12.00
61	MU 80675	Bearing Needle (45 Needles Required)	\$0.50
62	MU 36592	Washer	\$2.00
63	MU 21352	Eccentric	\$30.00
64	MU 21351	Handle Pin	\$10.00
65	MU 21353	Washer	\$0.50
66	A B MU 820495	Snap Ring	\$0.50
67	MU 39294	Handle Frame	Not Available
74	MU 28087	Traverse Bearing	\$36.00
75	MU 28086	Traverse	Not Available
76	MU 06259058	Snap Ring	\$2.00
77	MU 20218	Shoulder Bolt	\$12.00
78	MU 05659038	Lock Washer	\$1.00
79	MU 20231	Axle	\$12.00
80	MU 05759018	Roll Pin	\$1.00
81	MU 800-P-HD	Steer Wheel Assembly, Red Ultra Poly On Aluminum Hub W/ Bearings	\$55.00
	MU 800-P-ST	Steer Wheel Assembly, Poly On Nylon Hub W/ Bearings	\$38.00
	MU 800-N	Steer Wheel Assembly, Nylon W/ Bearings	\$36.00
	MU 800-S	Steer Wheel Assembly, Steel W/ Bearings	\$59.00
82	MU 820018	Bearing	\$2.00
83	MU 20301	Washer	\$2.00
84	A MU 06259060	Snap Ring	\$0.50
85	MU 35681	Washer	\$1.00
KITS	A MU 21719	Seal Kit	\$75.00
KITS	B MU 21719-SLIM	Slim Seal Kit	\$48.00