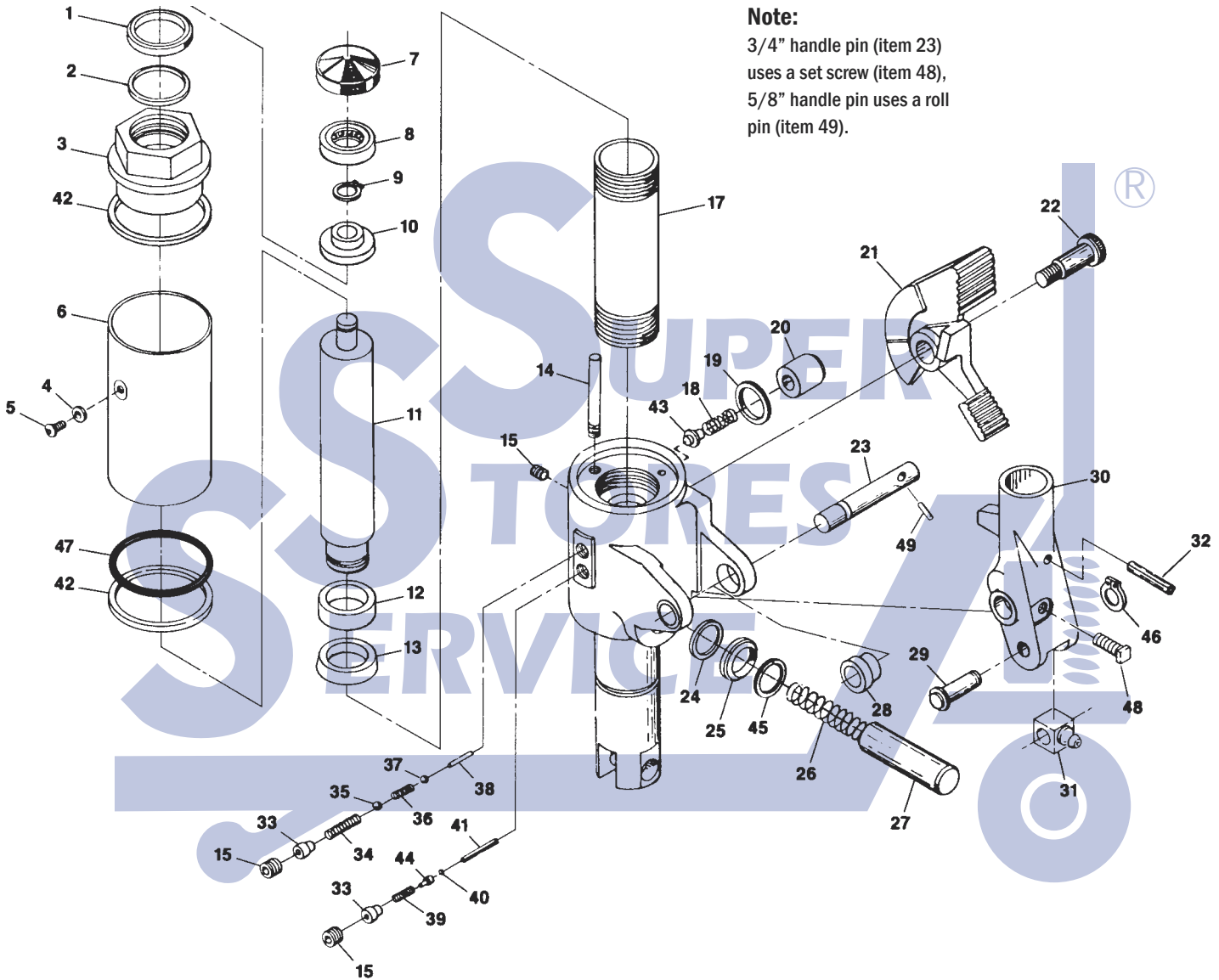


# Rol-Lift Series T and E Hydraulic Unit



**Note:**  
3/4" handle pin (item 23)  
uses a set screw (item 48),  
5/8" handle pin uses a roll  
pin (item 49).

## Valve Pins

### Valve Pins

### Giving You Trouble?

Rol-Lift upper and lower valve pins often need to be customized to fit your hydraulic unit. Call us and we will fax you a copy of the grinding procedure.

# RoL-Lift Series T and E Hydraulic Unit

Item	Part No.	Description	List Price
1	AB 1A	Scraper (3000 lb)	\$5.00
	CDE 1-33500	Scraper	\$5.00
2	AB 2A	Quad Ring (3000 lb)	\$4.00
	CD RL 1-30000	Quad Ring	\$2.00
3	RL 4-00066	Top Nut	Not Available
4	ABCDE RL 3-10200	Washer	\$2.00
5	RL 3-01000-02	Filler Plug	\$0.50
6	RL 4-00075	Reservoir Housing	Not Available
7	RL 3-27005	Bearing Cap	\$10.00
8	RL 3-70000	Thrust Bearing	\$12.00
9	RL 3-11024	Snap Ring	\$0.50
	RL 3-25751-06	Roll Pin	\$0.50
10	RL 3-27006	Thrust Collar	\$12.00
11	RL KIT-5145-TPTUM	Ram Assembly	\$20.00
12	A,B RL 14A	Bushing	\$5.00
	CDE RL 3-27018	Bushing	\$4.00
13	AB RL 15A	U-Cup (3000 lb)	\$10.00
	CDE RL 1-30500	U-Cup	\$12.00
14	RL 1-04500	Hole Plug, 1/8"	\$0.50
	RL 1-90001-02	Relief Valve	Not Available
15	C,G RL 1-04501	Screw Plug	\$4.50
17	RL 4-00077	Sleeve	*\$49.00
18	ABCD RL 3-20004	Spring (Foot Control Models)	\$0.50
	RL 3-20003	Spring ( Hand Control Models)	\$5.00
19	ABC RL 1-30001	Quad Ring, 1"	\$4.00
20	C RL 4-00079	Pin	\$5.00
	C RL 4-00078	Pin	\$5.00
21	RL 4-00057	Foot Pedal	Not Available
22	RL 3-00090-08	Bolt	\$7.00
23	RL 4-61035	Handle Pin, 5/8", Brass Bushing	\$8.00
	RL 4-00081	Handle Pin, 3/4", Nylon Bushing	\$5.00
24	ABCDE RL 1-30001	Quad Ring, 1"	\$4.00
	ABCE RL 1-32000	U-Cup, 13/16"	\$6.00
25	AB RL 35	Scraper, 1"	\$4.00
	ABC RL 1-33501	Scraper, 13/16"	\$5.00
26	A RL 3-20013	Spring (1" Piston)	\$5.00
	ACD RL 3-20005	Spring (13/16" Piston)	\$5.00
27	RL 4-60065	Piston, 1"	\$28.00
	C RL 4-00080	Piston, 13/16"	\$18.00
28	RL 3-27055	Bushing, 5/8", Brass	\$2.00
	AD RL 3-27020	Bushing, 3/4", Nylon	\$1.00

Item	Part No.	Description	List Price
29	RL 4-00082	Piston Pusher Shaft	\$5.00
30	RL 4-60072	Handle Socket (Foot Control Models)	\$82.00
	RL 4-60082	Handle Socket (Hand Control Models)*	\$49.00
31	C RL 4-00083	Piston Pusher	\$10.00
32	RL 3-25754-11	Roll Pin	\$1.00
33	ACDG RL 3-27009	Spring Guide	\$2.00
34	ACDG RL 3-20006	Spring	\$1.00
35	ABCDEG RL 3-30002	Ball	\$2.00
36	ABDG RL 3-20007	Spring	\$2.50
37	ABCDEG RL 3-30000	Ball	\$1.00
38	▲ RL 4-00084	Upper Valve Pin (Round)	\$2.00
39	ACDG RL 3-20008	Spring	\$1.00
40	ABCDEG RL 3-30001	Ball	\$2.00
41	▲ RL 4-00086	Lower Valve Pin (Square)	\$5.00
42	A RL 58A	Washer (3000 lb)	\$6.00
	CDE RL 3-26002	Washer	\$4.00
43	ACD RL 3-27008	Spring Guide	\$3.00
44	ACDG RL 3-27007	Ball Guide	\$2.00
45	RL 67	Retaining Ring (1" Piston)	\$8.00
	RL 3-11000	Retaining Ring (13/16" Piston)	\$3.00
46	RL 3-11001	Snap Ring	\$1.00
47	AB ▼ RL 1-40004	O-Ring (3000 lb)	\$3.00
	CDE ▼ RL 8B	O-Ring (5000 lb)	\$2.00
48	RL 3-04501-05-A	Set Screw Kit	\$1.00
49	RL 3-25750-07	Roll Pin	\$0.50
KITS A	RL T5AOK	Seal Kit (1-3/8" Lift Ram; 3000 lb, Some 4500 lb)	\$60.00
KITS B	RL 7-99003	Seal Kit (Slim Version of T5AOK)	\$42.00
KITS C	RL T5BOK-F-SUPER	Super Seal Kit (1-5/8" Lift Ram) Foot Control	\$70.00
KITS C	RL T5BOK-H-SUPER	Super Seal Kit (1-5/8" Lift Ram) Hand Control	\$70.00
KITS D	RL T5BOK	Complete Seal Kit (1-5/8" Ram)	\$49.00
KITS E	RL 7-99001	Seal Kit (1-5/8" Lift Ram)	\$29.00
KITS G	RL 7-99000	Seal Kit (Spring and Ball Kit)	\$12.00
	HU RL 5000-F	Rebuilt Hydraulic Unit - Exchange	*\$139.00
	HU RL 5000-H	Rebuilt Hydraulic Unit - Exchange	*\$139.00

▼ This is an option not found on all jacks.  
▲ These parts must be ground to fit each individual pump in order to function properly. Each pump is different.